

Are **YOU** Maximizing Your Density?

Density**MAX**™

GeoShack
Everything for Jobsite Accuracy.



What is **DensityMAX** by GeoShack?

DensityMAX is a wireless enhanced GPS system that combines the reliability of Topcon GPS Machine Control Systems with the unique Carlson Landfill Software to maximize your landfill density.

DensityMAX Allows You To:

- Maximize Usable Airspace
- Increase Working Face Density
- Improve Efficiency by Avoiding Unnecessary Compaction Passes
- Control Waste Placement Grades and Slopes
- Real Time Density Reporting
- Track Daily Fill Volume
- Observe Compaction from Remote Location

Designed for Landfill Compactors

- Track your compaction in real time with color mapping using pass counts or vertical deflection
- Share data real-time between two machines with Dynamic Data Exchange (DDE) for maximum productivity
- Reduce airspace, maximize compaction reaching optimum density in less time
- Easily generate Airspace Utilization Factor (AUF), density and volume reports
- Minimize daily cover and analyze productivity and report from anywhere

For more details of the many benefits that **DensityMax** can bring to your landfill, please call **972-415-7942** or visit **www.densitymax.com**



Stages of GPS Implementation into a Landfill.

go to www.densitymax.com for more details.

	Stage 1 Survey Only System	Stage 2 Basic Grading	Stage 3 Advanced Features Static Connectivity	Stage 4 Advanced Features Real Time Connectivity
Base Rover	X	X	X	X
Basic Surveying	X	X	X	X
In-cab Topographical Info		X	X	X
Activity Logging			X	X
Warning Zones			X	X
Physical Data Transfer			X	X
Two-way Data Communication				X
Machine Data Sharing				X
Remote diagnostics & Support				X
Remote Training				X

Lower your Carbon Footprint with DensityMAX

Enables optimal compaction with less passes for both lower fuel consumption and lower cost of operation while reducing machine wear.

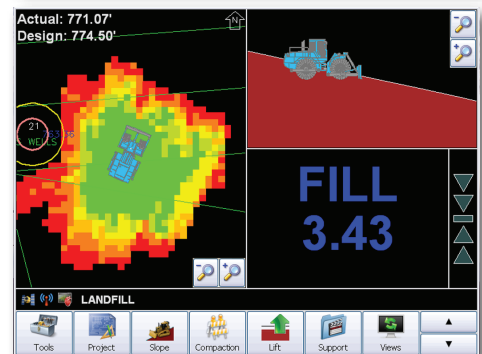
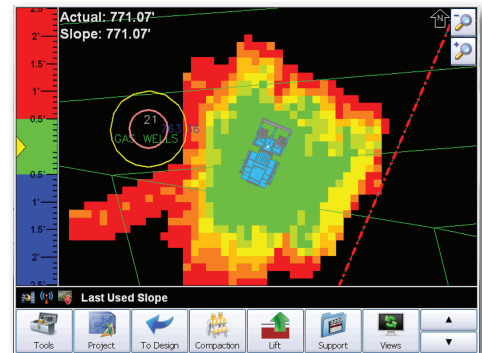
Makes best use of landfill airspace by increasing density through analysis of daily reports and actual material placement

Key Features

- Eliminate overfill for outer design slopes
- True recording of actual material placement like hazardous material
- Avoidance Zones such as gas wells and liners
- Import scale house weights for daily density calculations
- Forward/reverse compaction
- Collect & stake points
- Heartbeat Connectivity connects machines and office
- Remote monitoring of machines with Carlson Fleet Manager Office
- Historical playback for machines and material placement

Special Features

- Customizable screens
- Support for most all GPS/GNSS receivers
- Direct import of .dwg, .dxf, TN3, GC3, LN3, TIN, GRD and more...



For more details of the many benefits that DensityMax can bring to your landfill, please call **972-415-7942** or visit www.densitymax.com

