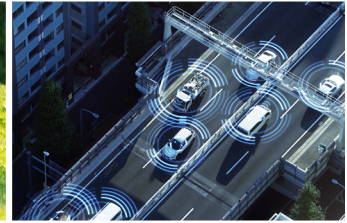
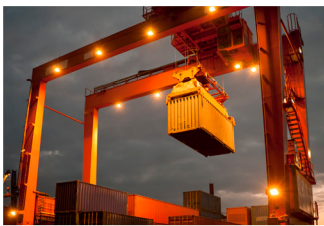
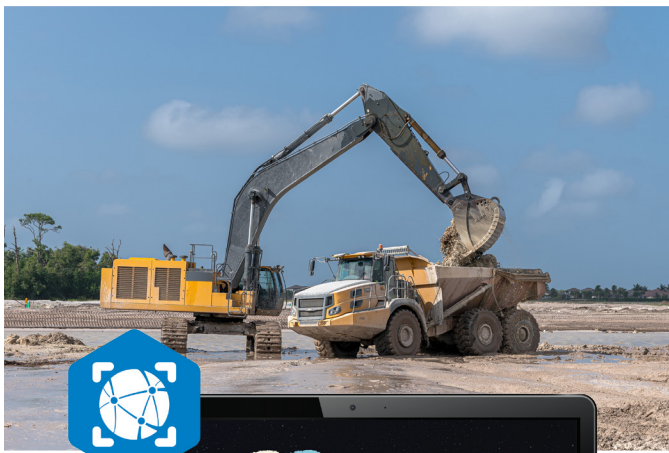


# Global GNSS Correction Services

Topnet Live



Managed by Topcon's network and geodesy experts, ensuring a precise and reliable always-on service.





Topnet Live

# The best of RTK and PPP with flexible subscriptions

**Truly global solution**

**Operated by Topcon**

**Seamless subscriptions**

**Reliable service**

**Flexible and tailored**

**Fully scalable**

Topnet Live is a real-time GNSS correction service delivering high quality data to GNSS receivers used for surveying, construction, GIS, mapping, OEM, system integrators and agricultural applications worldwide. Fully interoperable with all makes of network capable rovers, subscriptions are made easily available through the Topnet Live website.

Designed to meet the unique needs of our customers, Topnet Live provides a wide range of subscription services. Realpoint RTK, Skybridge RTK backup, and Starpoint PPP correction services can be utilized via a variety of subscription packages.

#### **Realpoint (RTK)**

Provides network RTK accuracy and quick start-up time.

#### **Skybridge (RTK backup)**

Provides and maintain position accuracy to increase your productivity. Skybridge can maintain GNSS rover accuracy when RTK services are interrupted.

#### **Starpoint Pro (PPP)**

Provides the PPP service anywhere on the planet, independent of local networks.

#### **Surveying – Realpoint, Starpoint Pro, and Skybridge (Pro)**

Topnet Live delivers high-accuracy positioning to professional surveying and engineering applications such as land surveys, engineering surveys, GIS and mapping. Topnet Live removes the need for individual base stations, dramatically increasing production and safety.

#### **Agriculture – Realpoint, Starpoint (Pro), and Skybridge (Pro)**

Topnet Live networks deliver consistent and accurate positions to precision agriculture machines used in applications across the crop cycle such as soil preparation, seeding and crop care. Equipped tractors, sprayers, spreaders and harvesters benefit from fast initializations and reliable positioning any time of the day or night.

#### **Construction – Realpoint**

Topnet Live is increasingly employed in high-profile construction projects in the shift away from on-site base stations. Large highway construction projects, airport runways and machine control operations all benefit from the reliable accuracy and performance of Topnet Live GNSS reference networks.



Specifications subject to change without notice.  
© 2021 Topcon Corporation. All rights reserved.  
7010-2090 D 7/21

[www.topconpositioning.com/topnetlive](http://www.topconpositioning.com/topnetlive)

